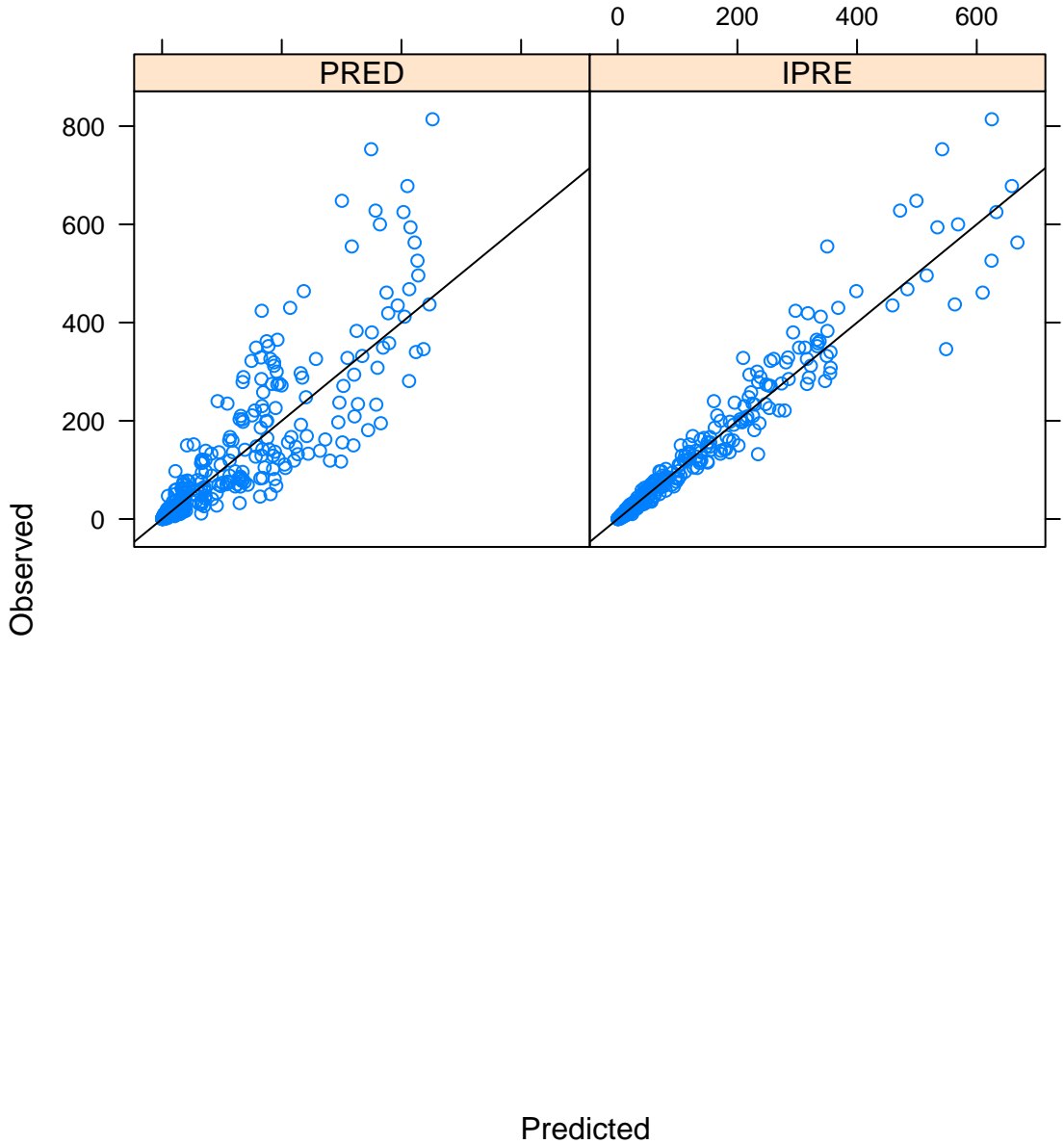


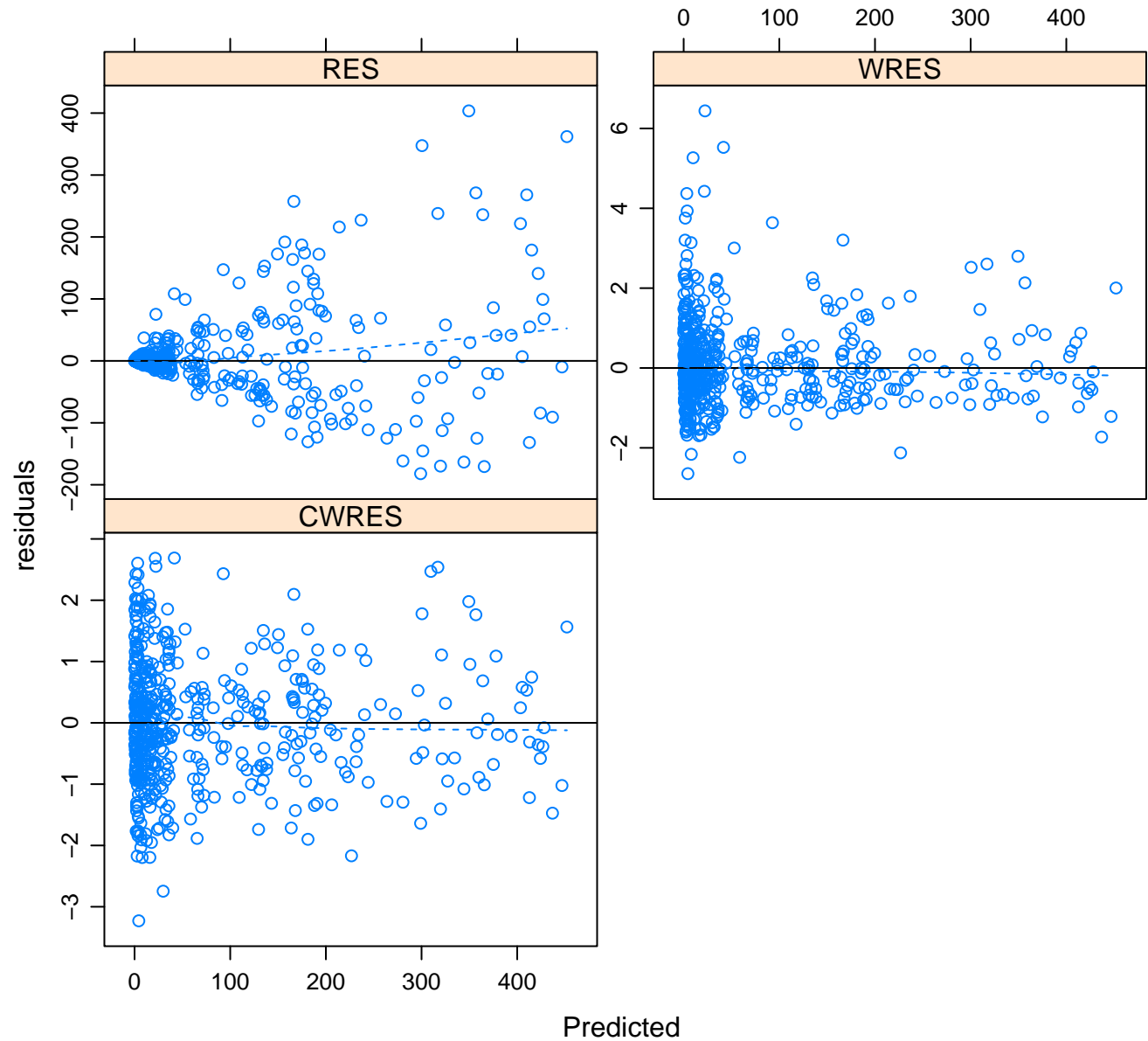
Model 1005

Observed vs. Predicted for all data



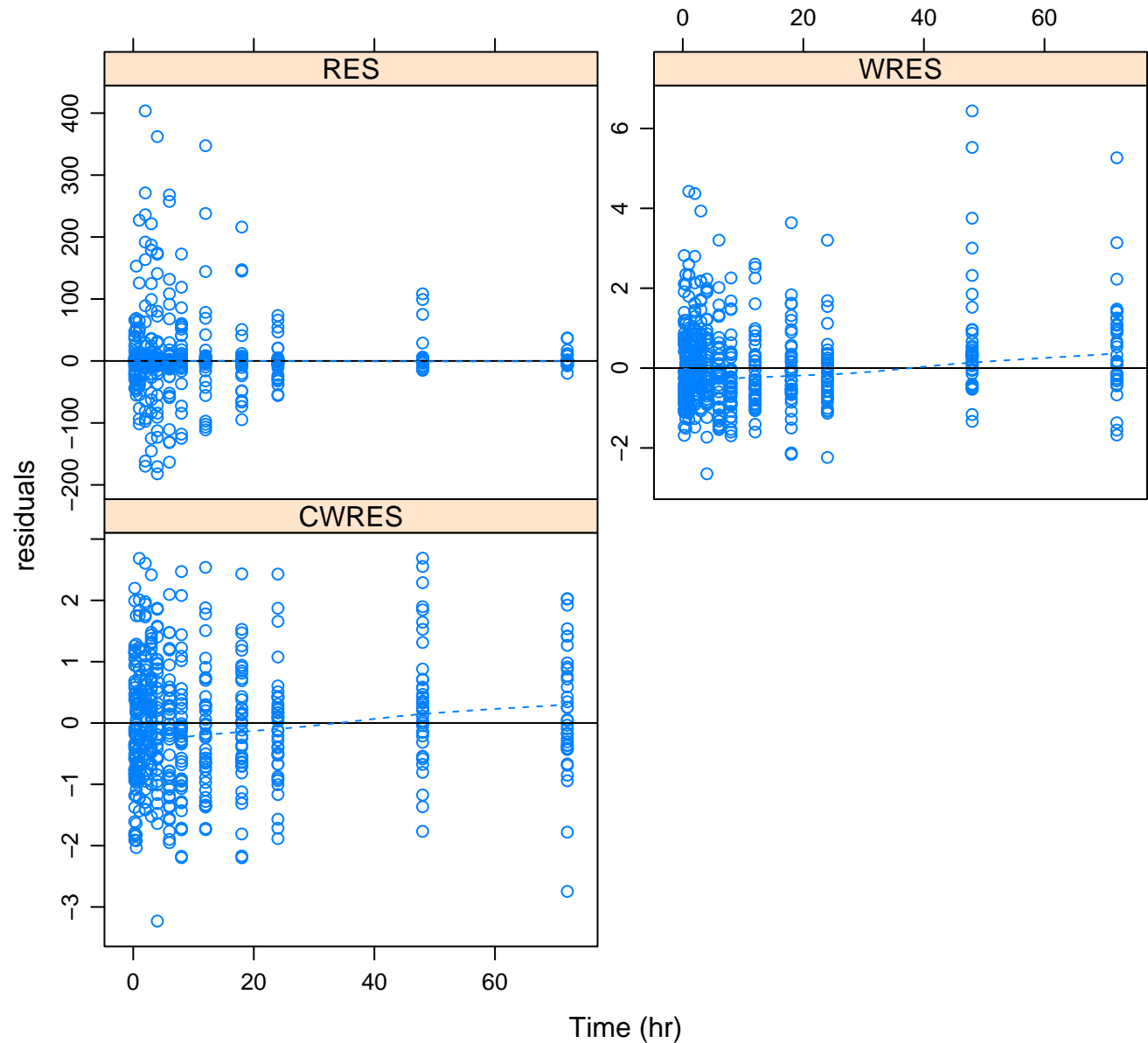
Model 1005

Residuals vs. Predicted for all data



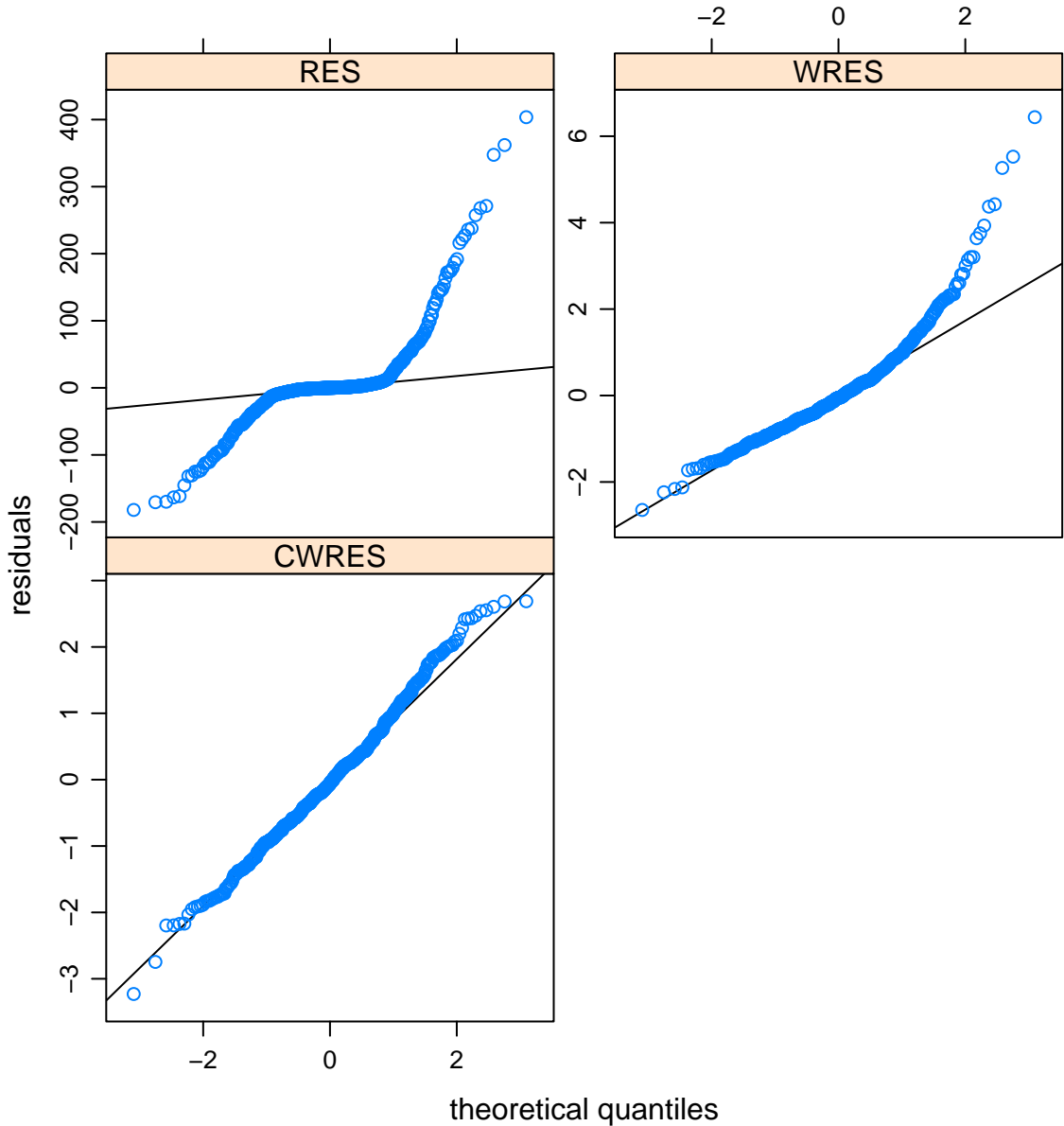
Model 1005

Residuals vs. Time for all data



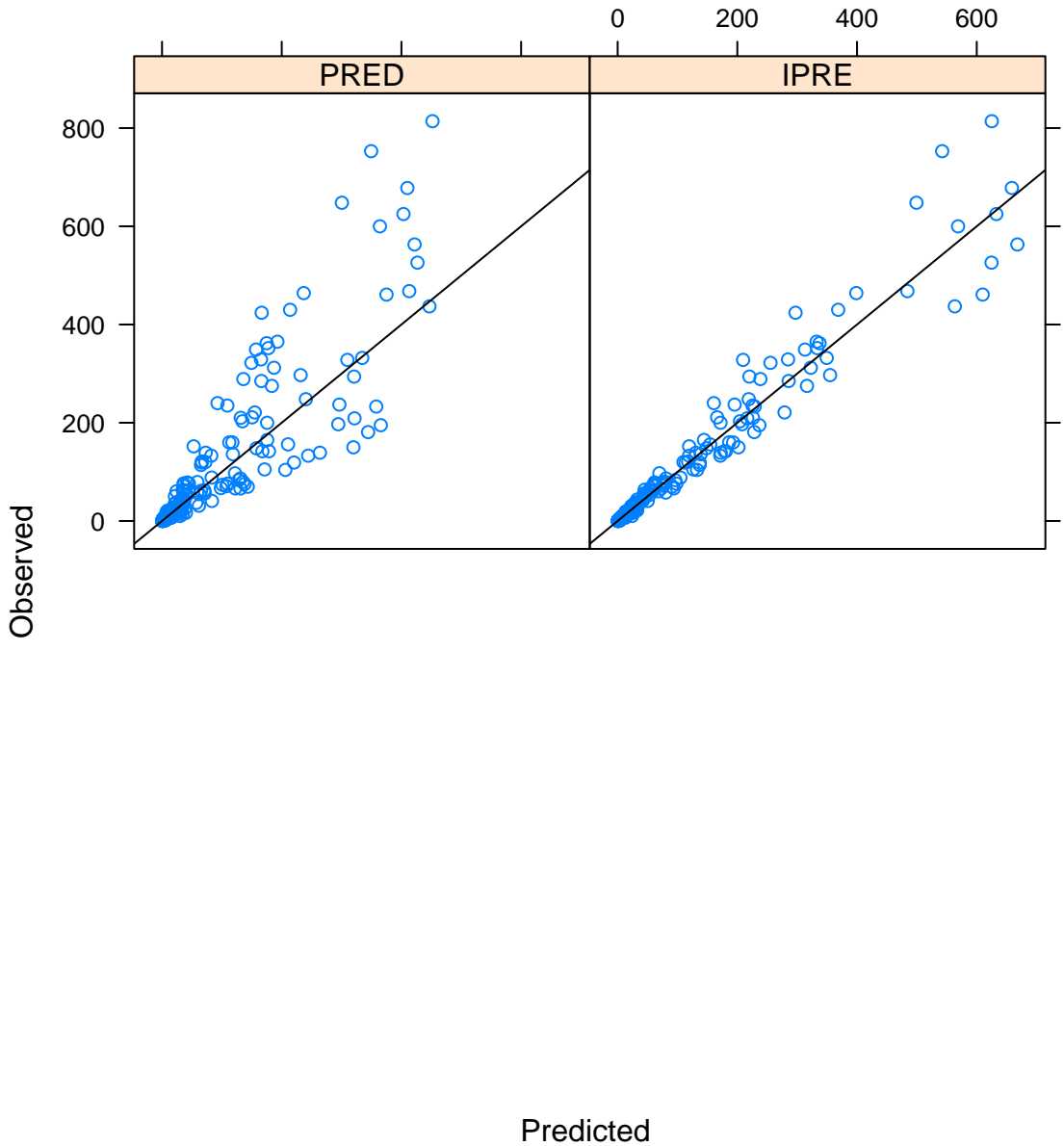
Model 1005

Normal Q-Q Plot Residuals for all data



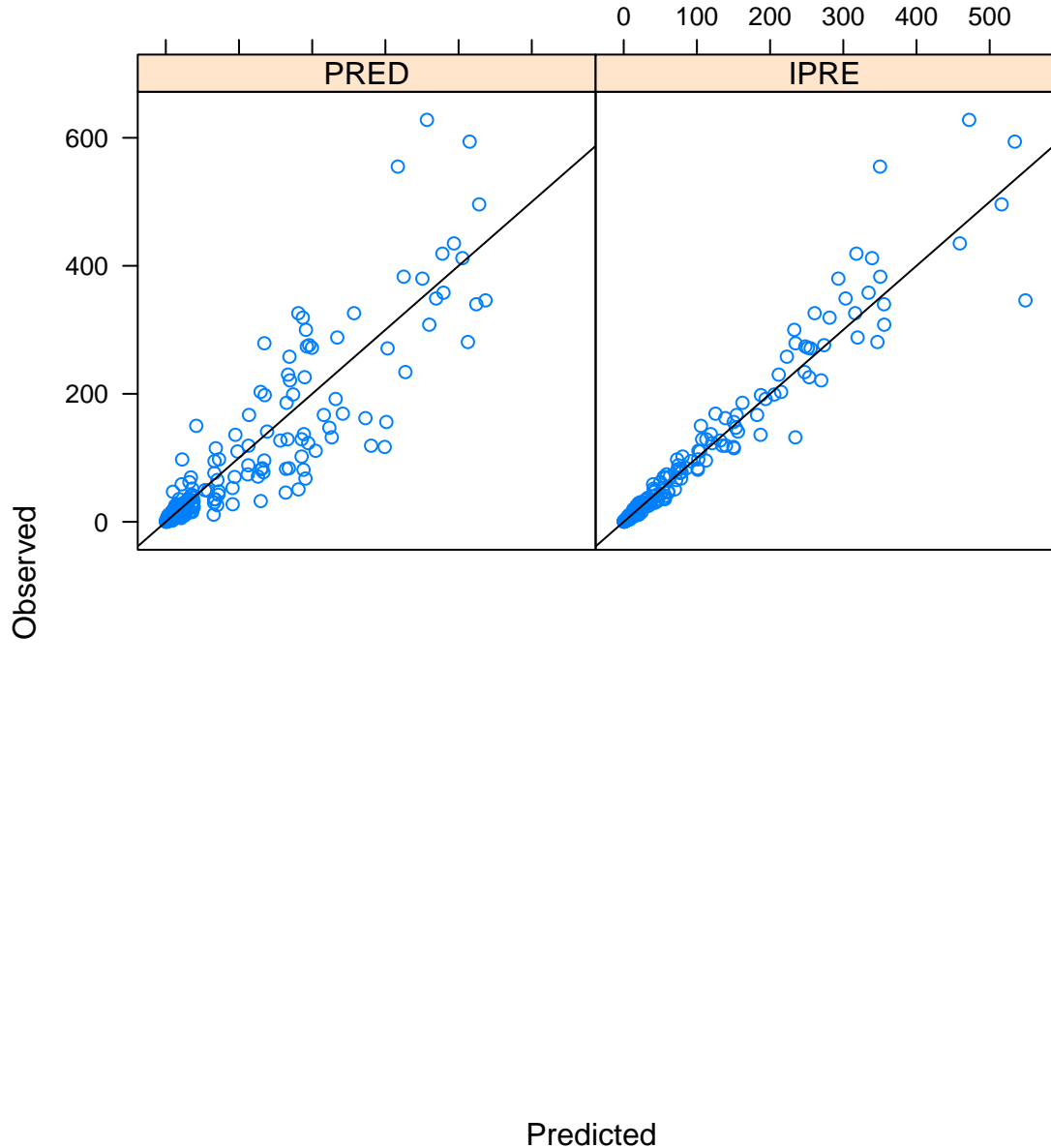
Model 1005

Observed vs. Predicted for female data



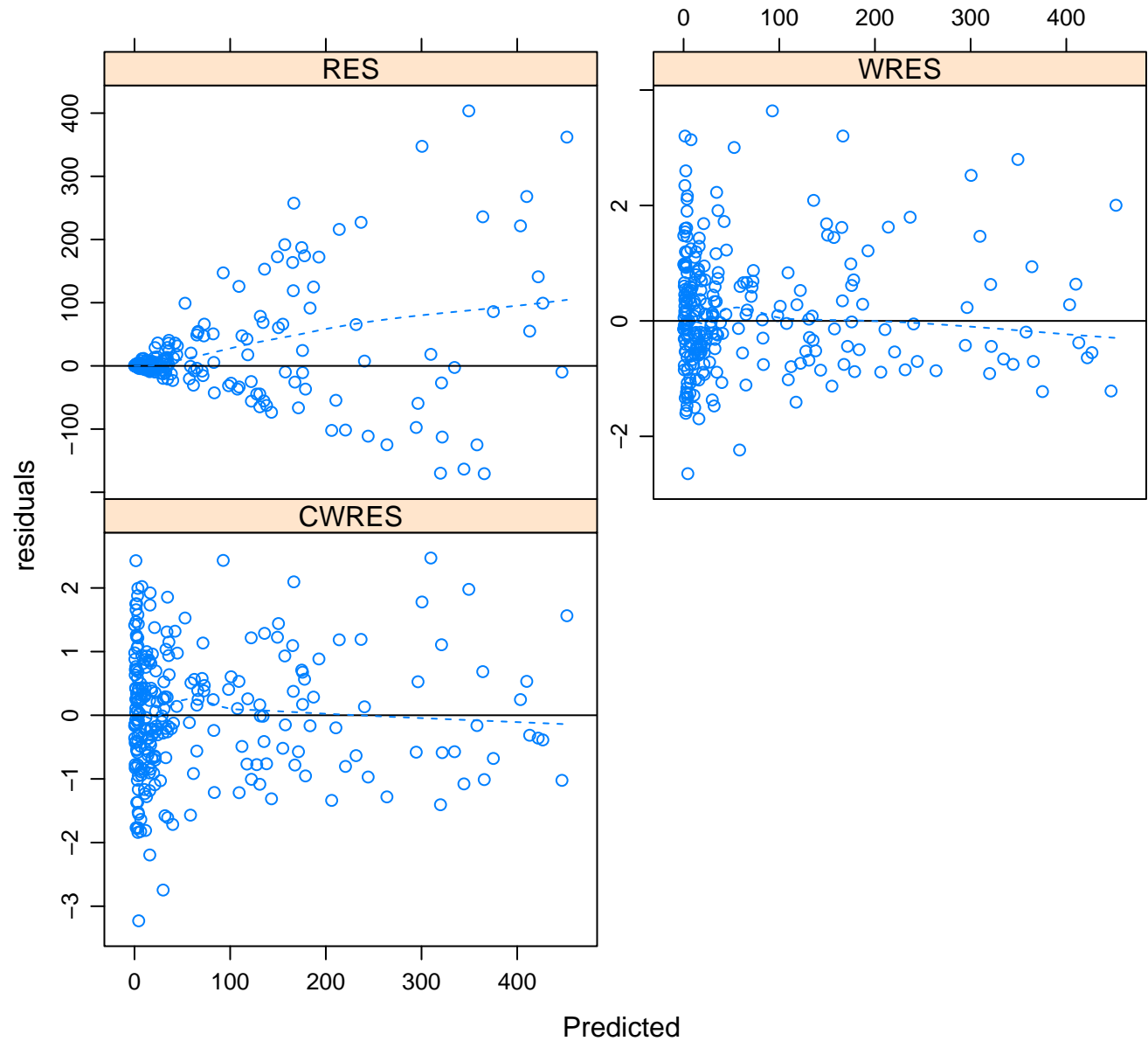
Model 1005

Observed vs. Predicted for male data

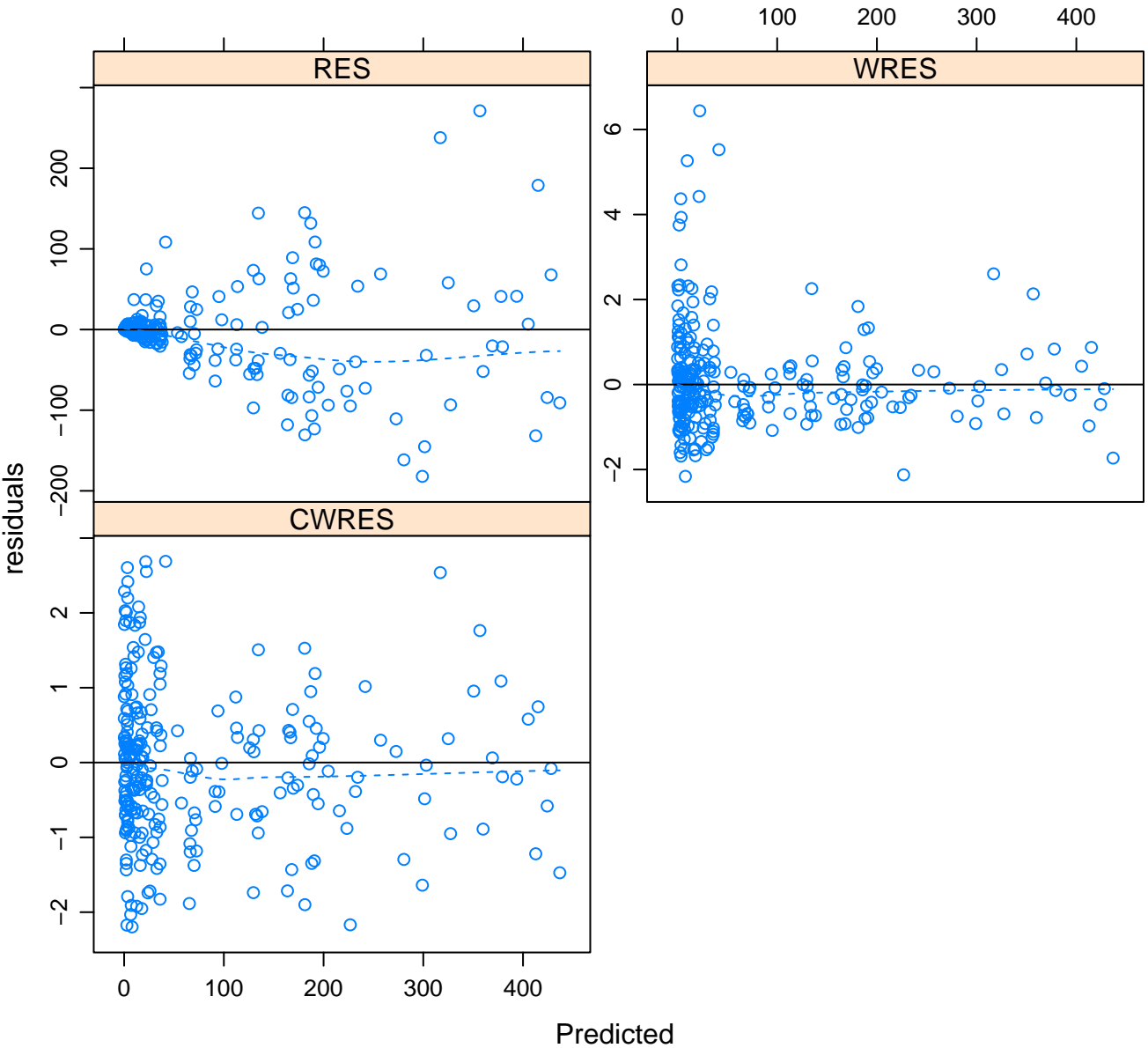


Model 1005

Residuals vs. Predicted for female data

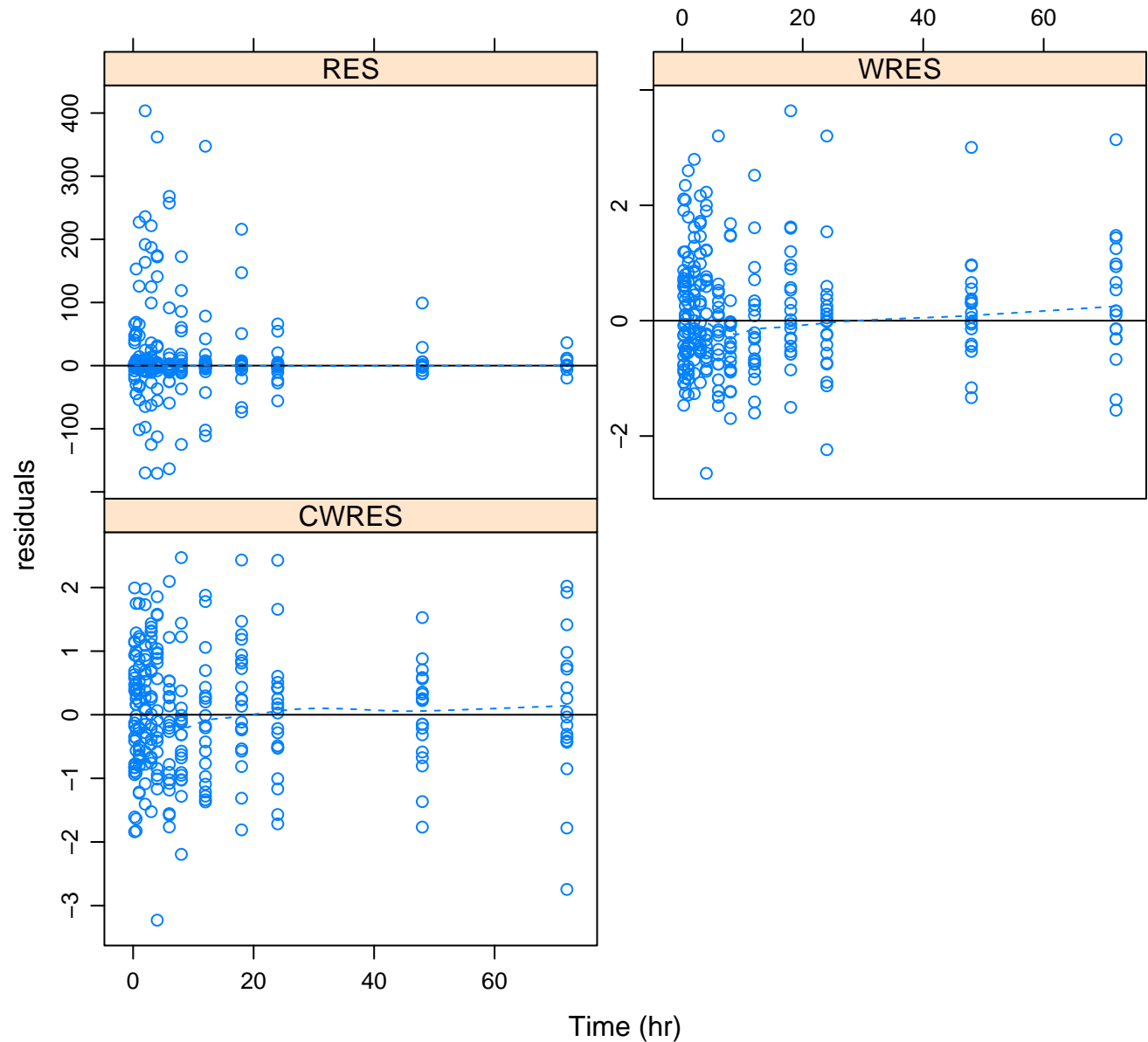


Model 1005
Residuals vs. Predicted for male data



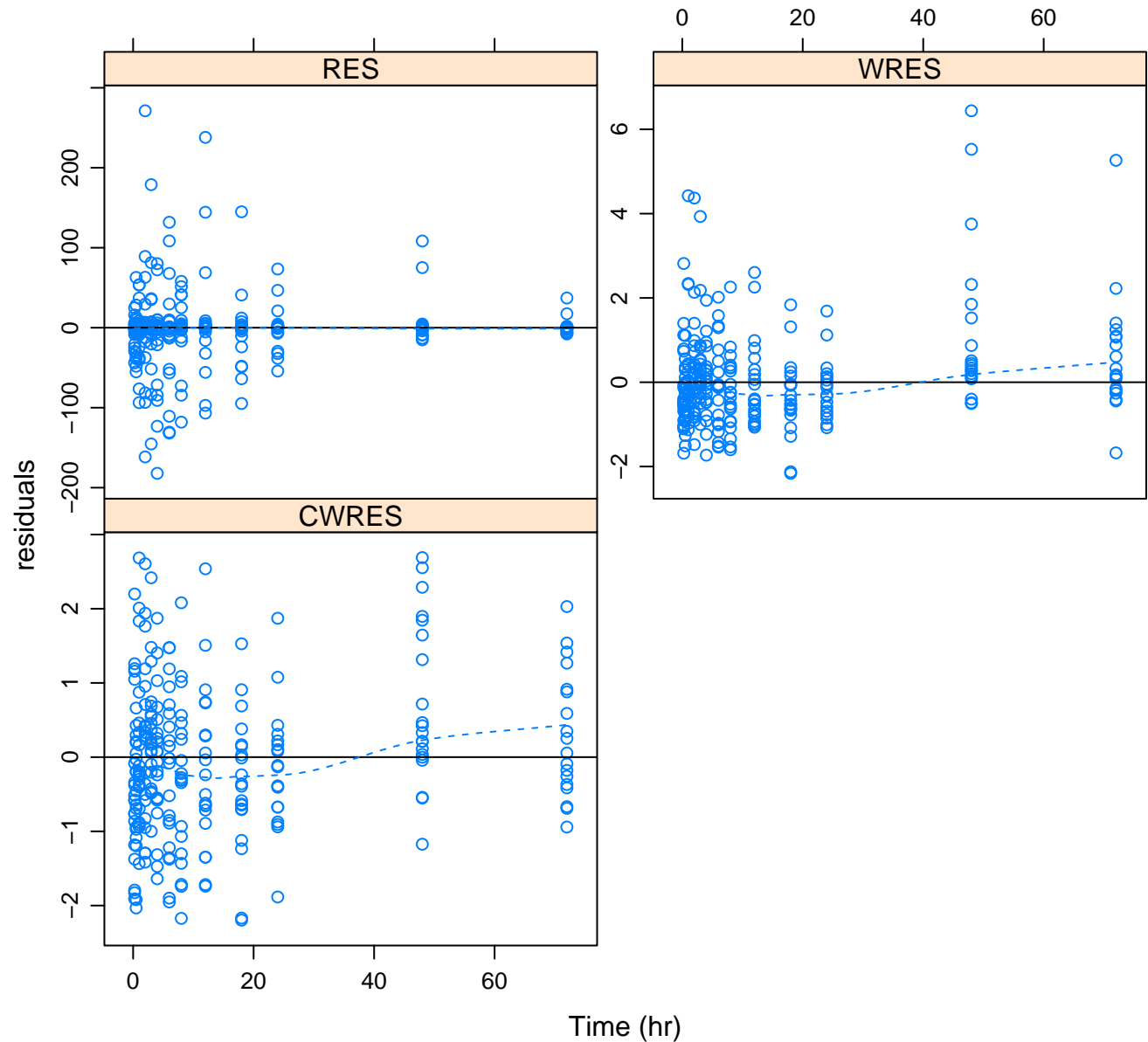
Model 1005

Residuals vs. Time for female data



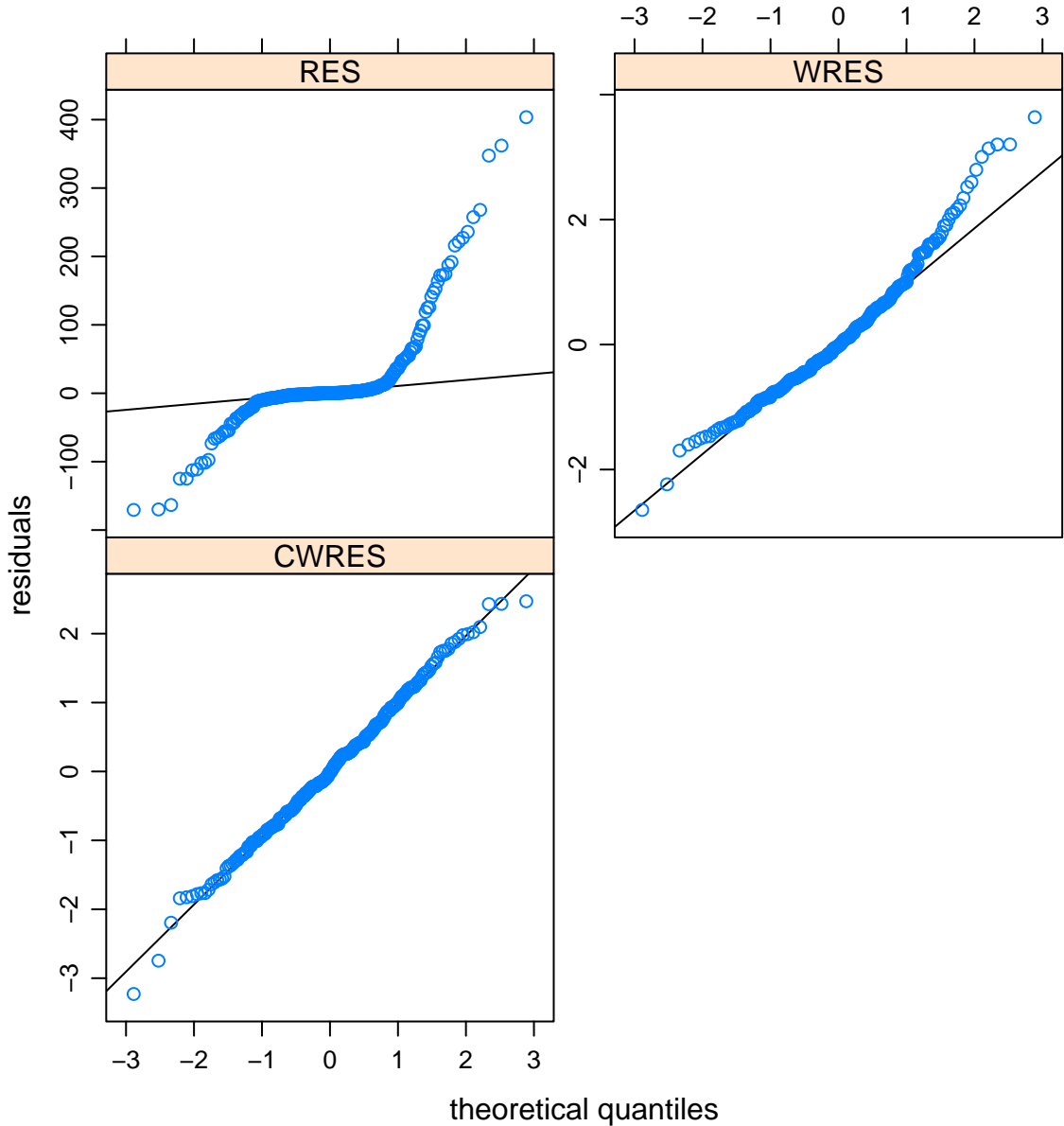
Model 1005

Residuals vs. Time for male data



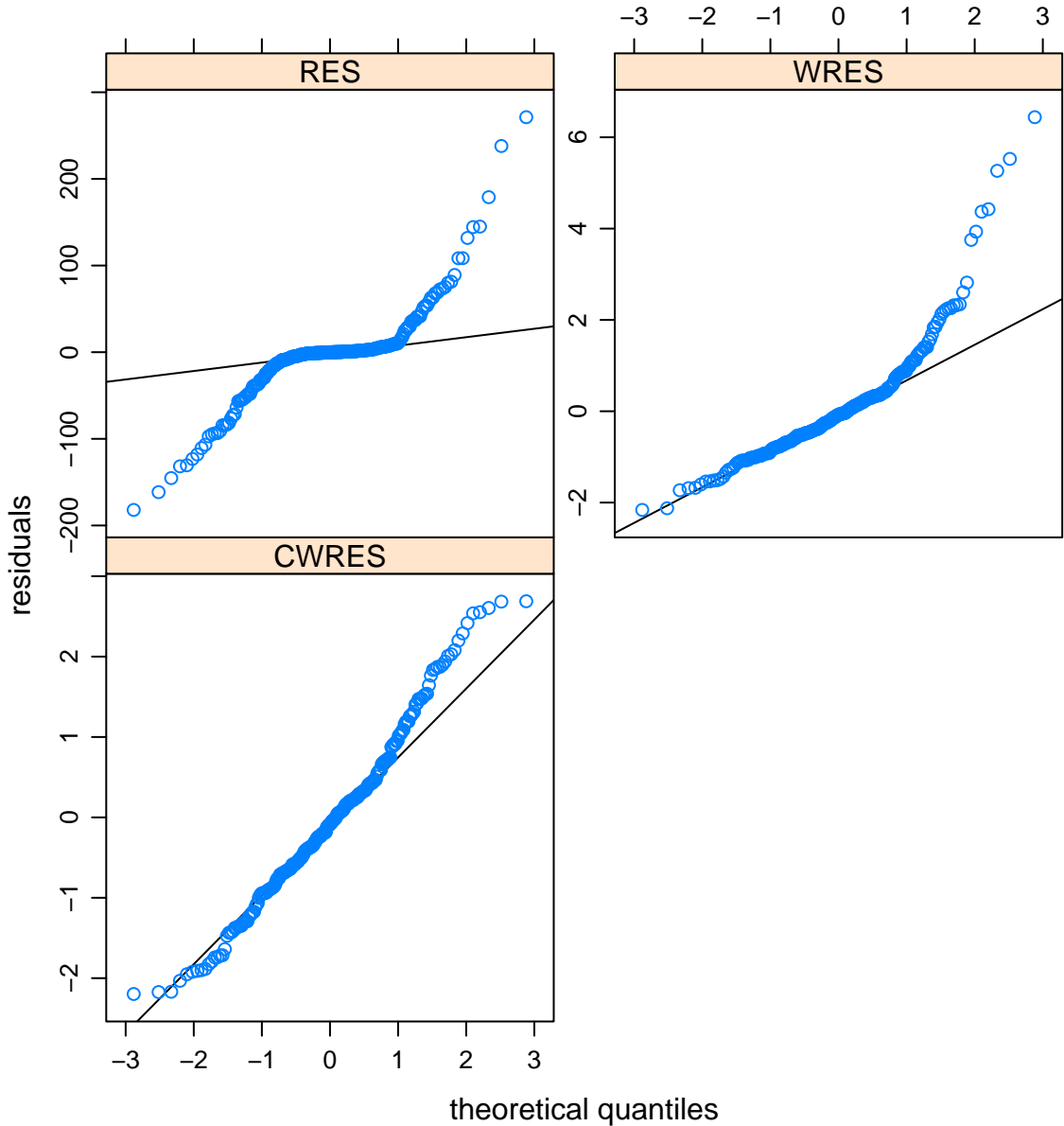
Model 1005

Normal Q-Q Plot Residuals for female data

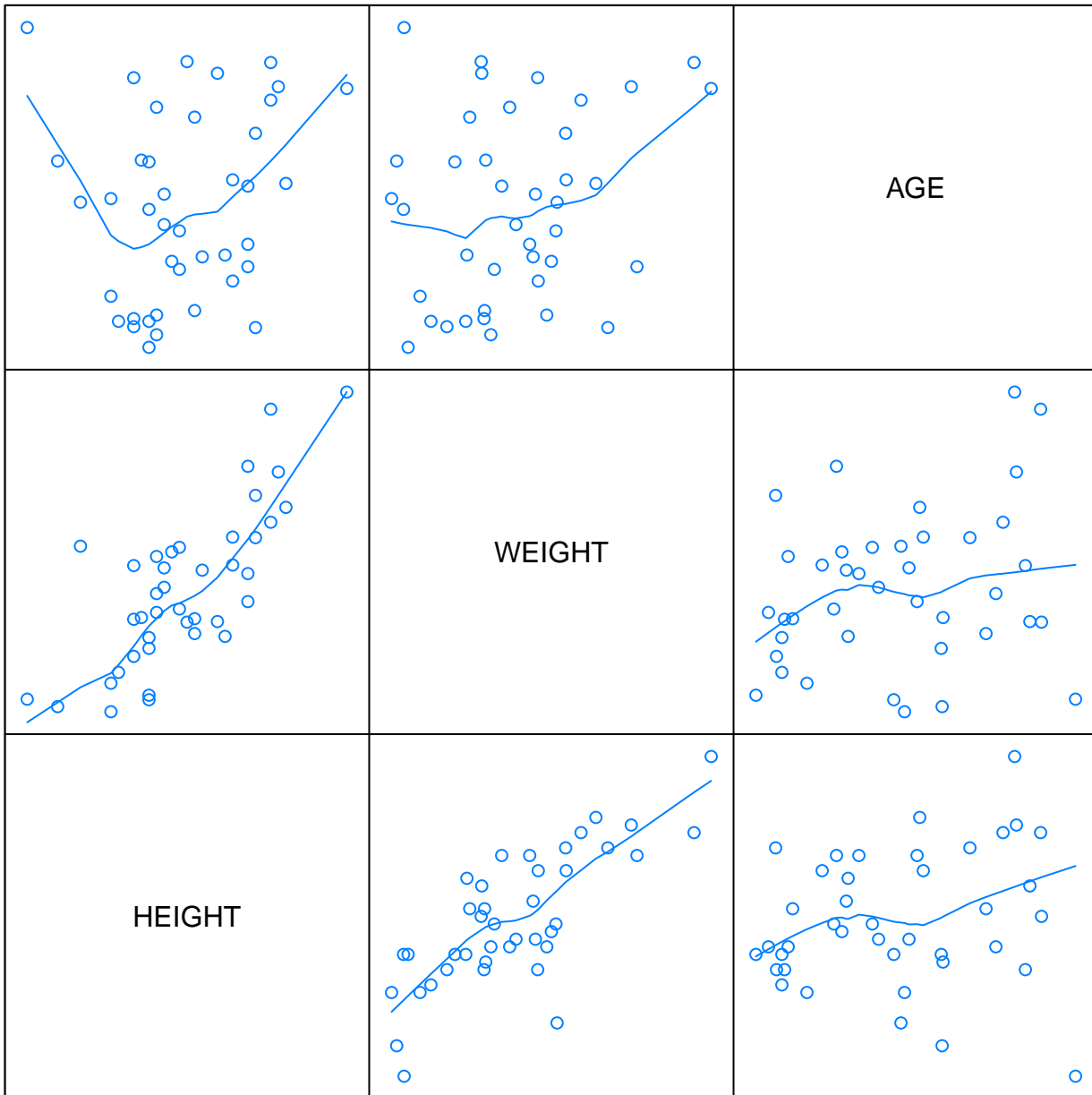


Model 1005

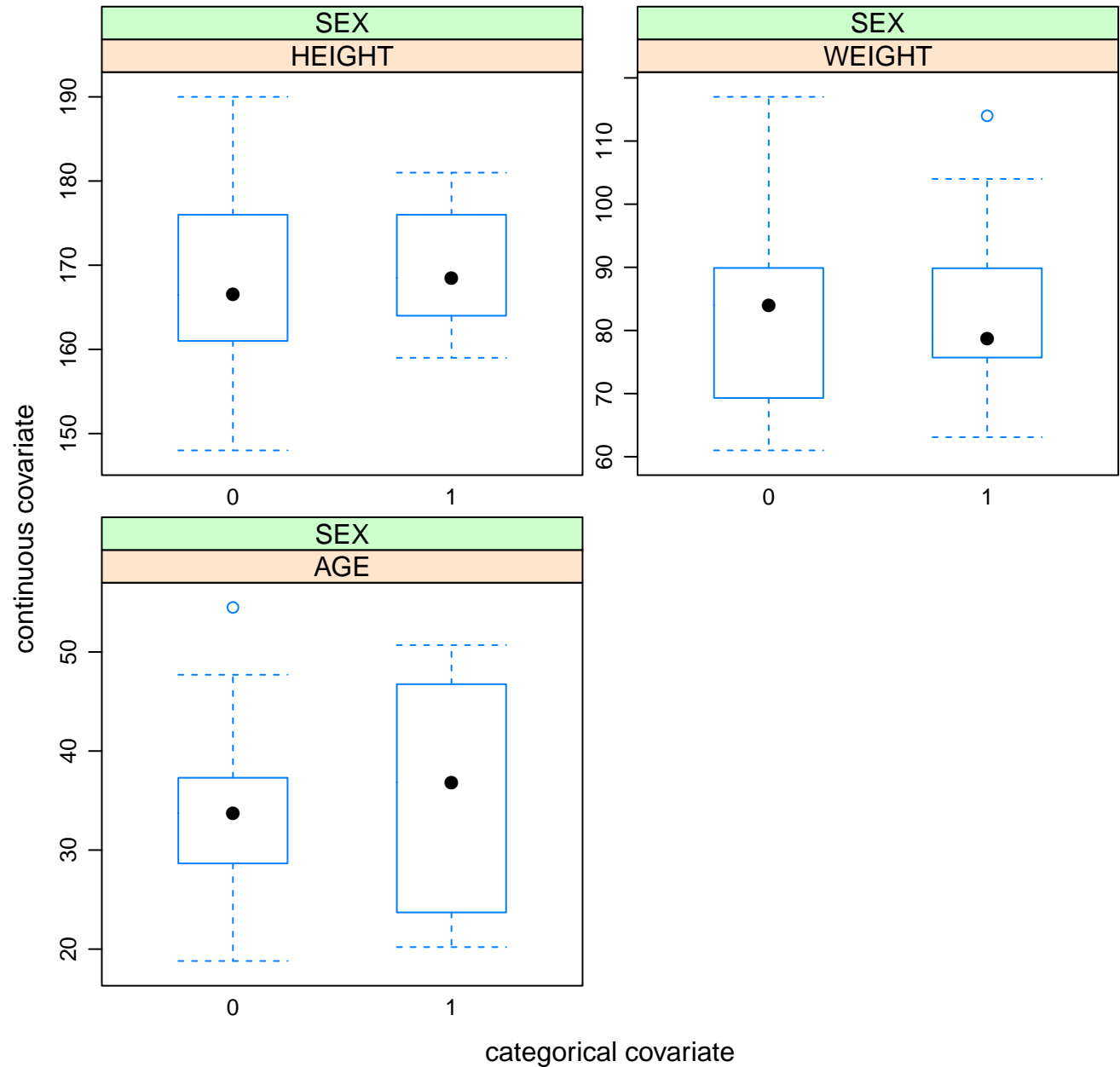
Normal Q-Q Plot Residuals for male data



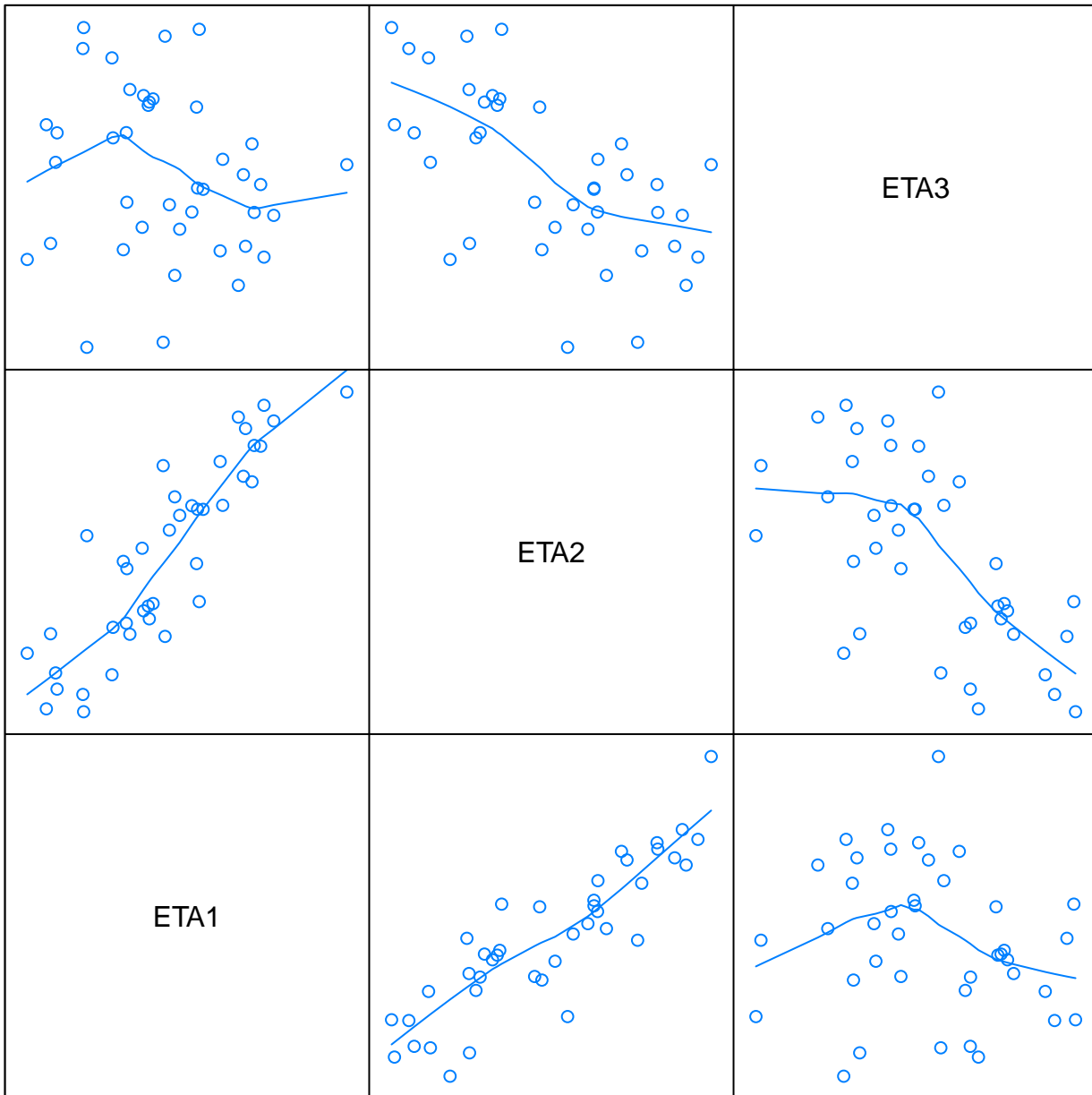
Covariate Scatterplots



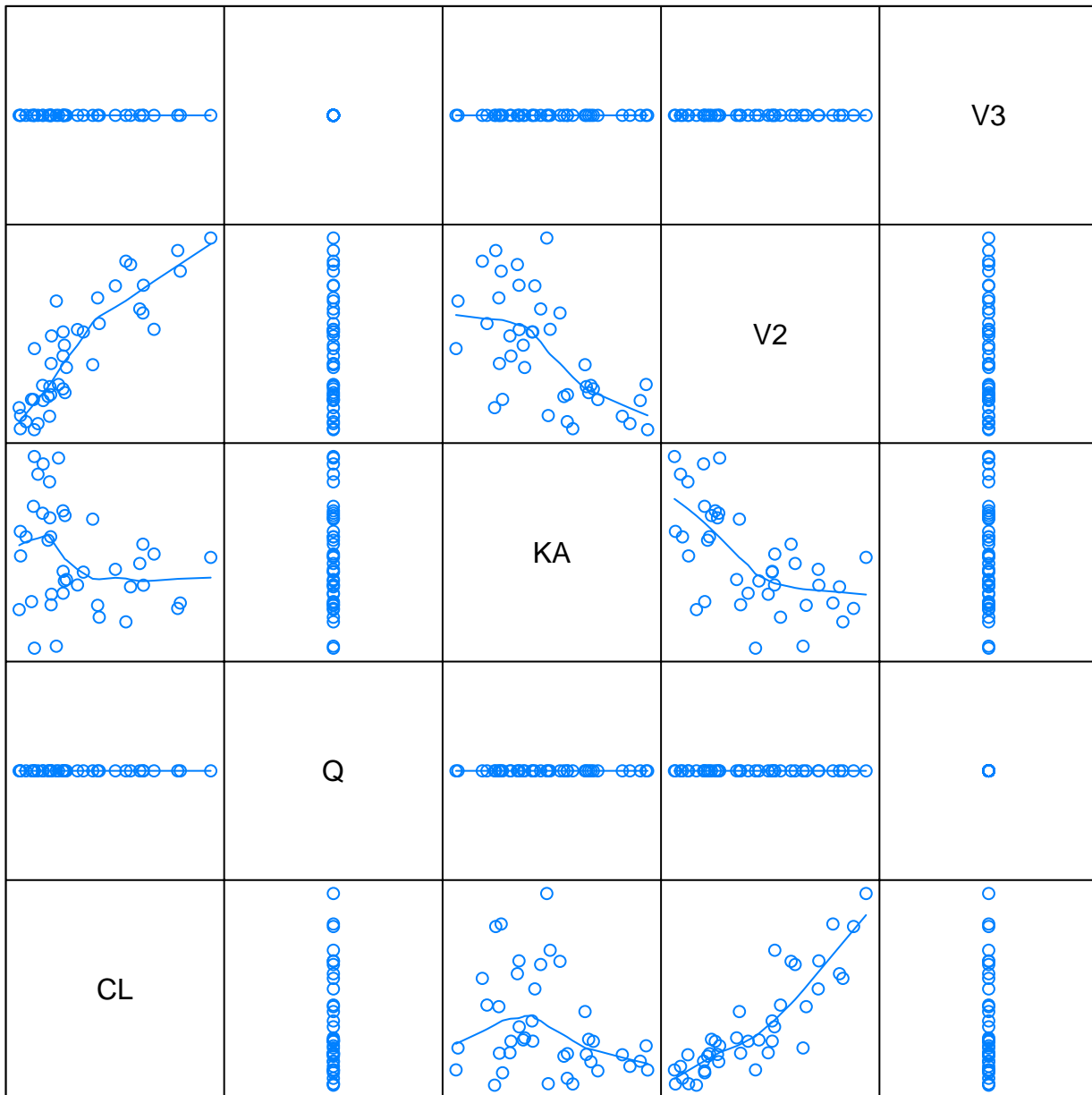
Continuous Covariates vs. Categorical Covariates



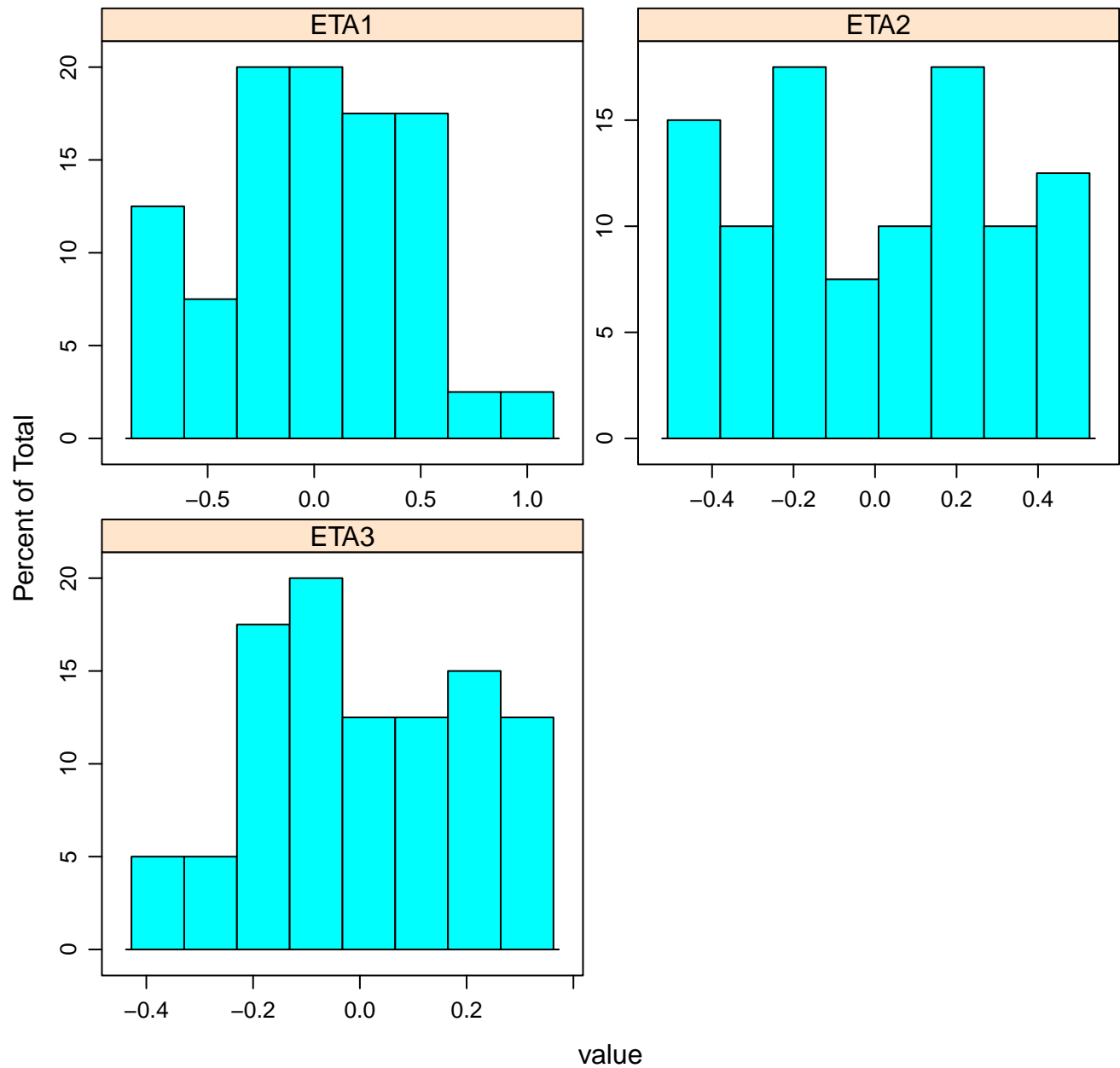
ETA Scatterplots



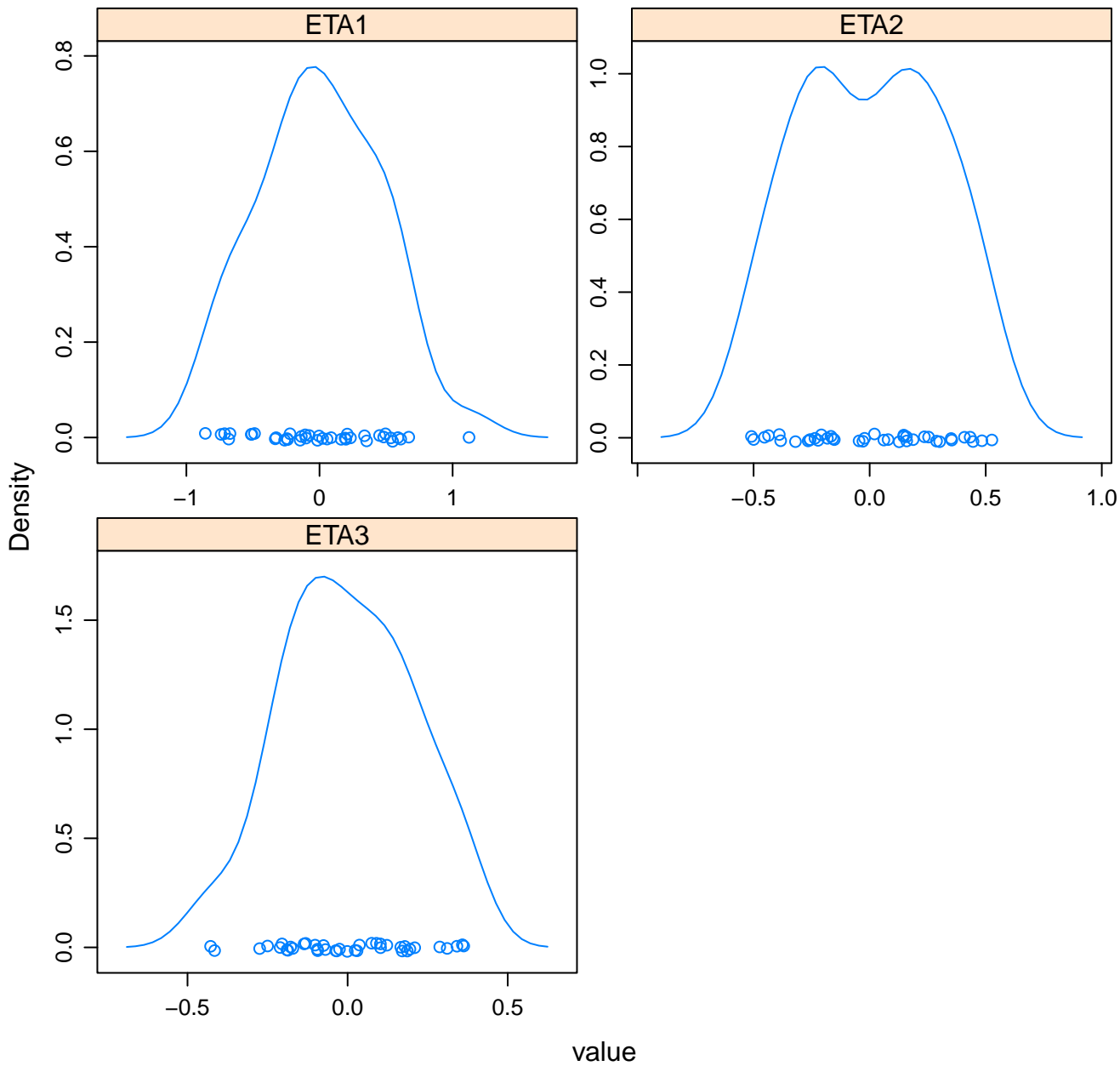
Parameter Scatterplots



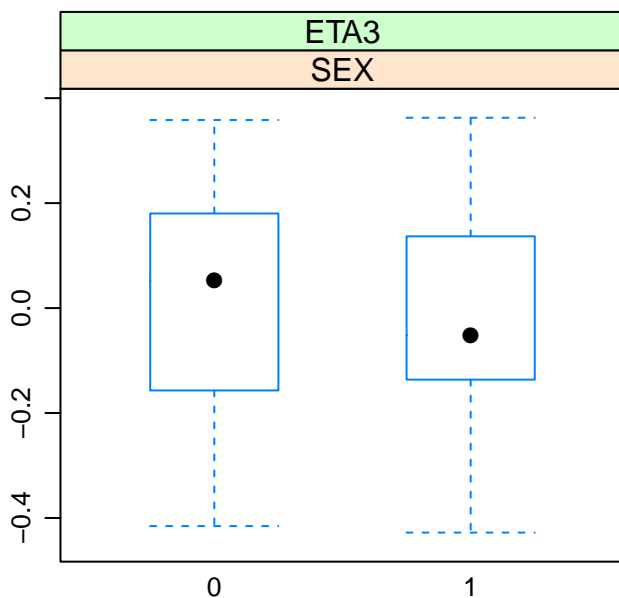
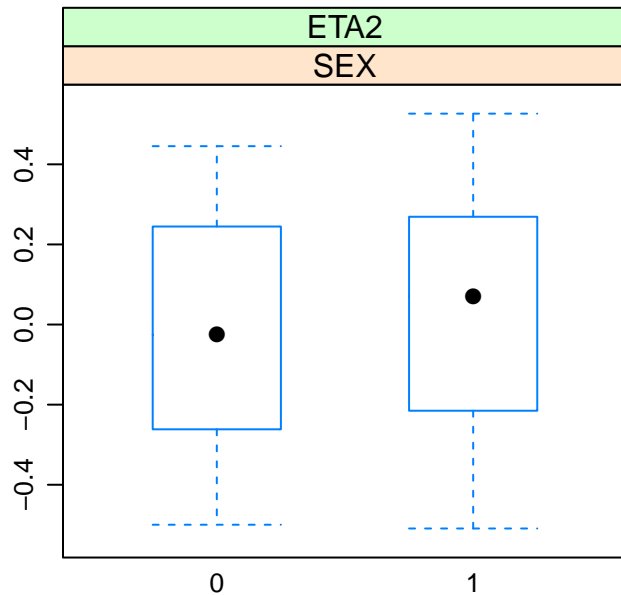
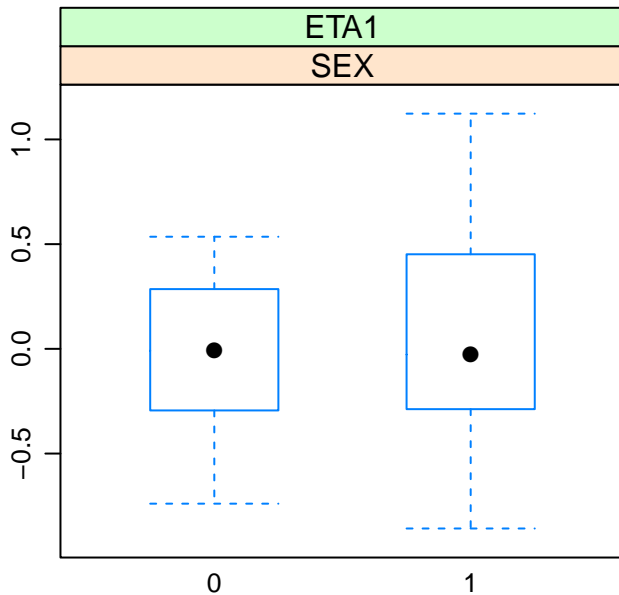
Histograms of Etas



Density of Etas

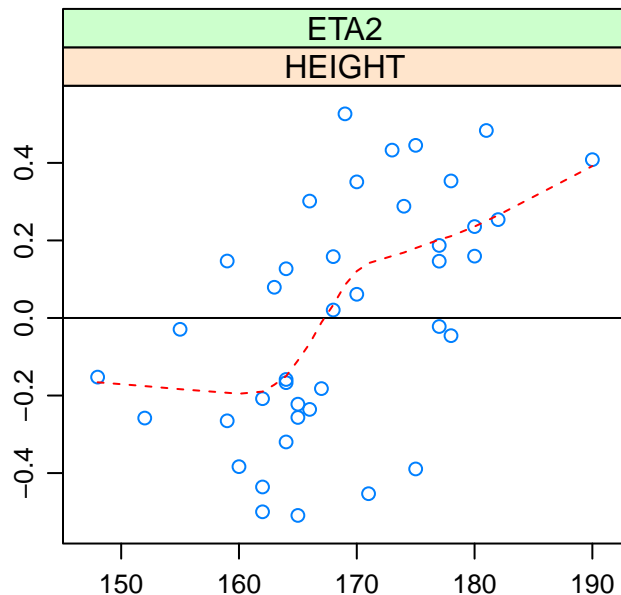
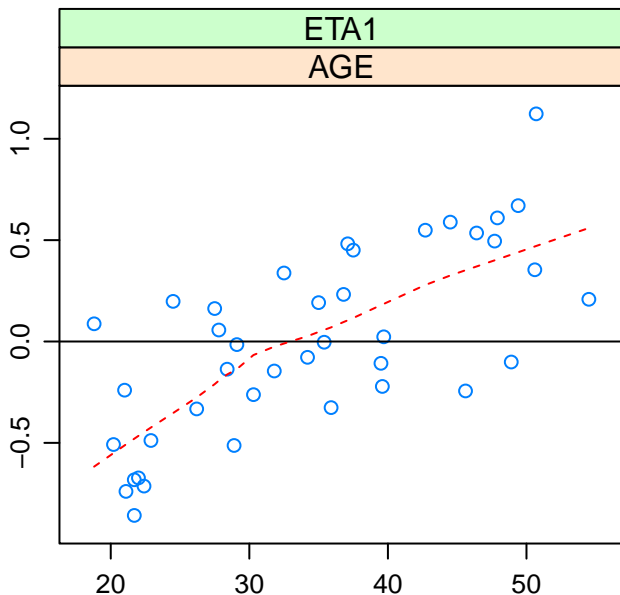
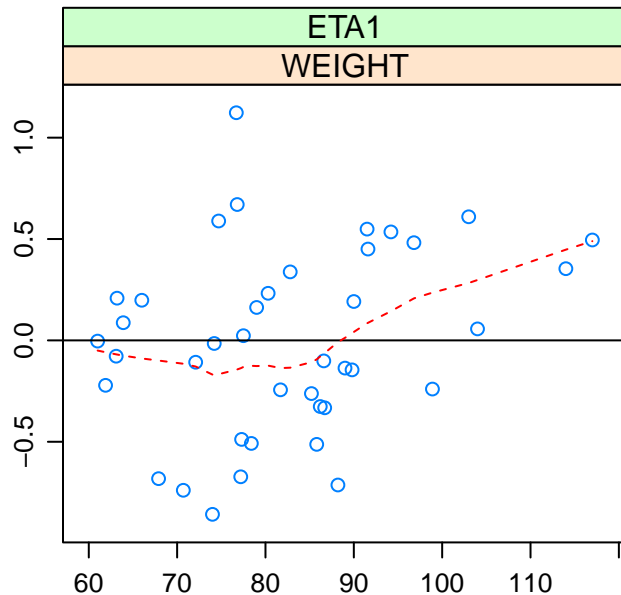
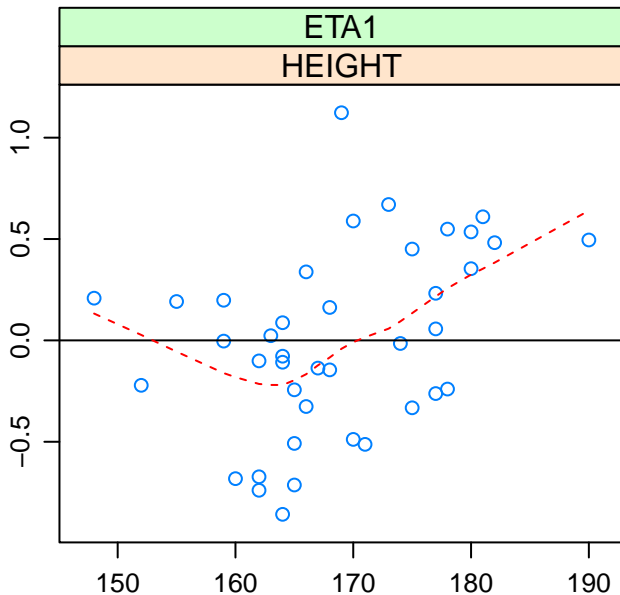


Boxplots of Etas by Categorical Covariate



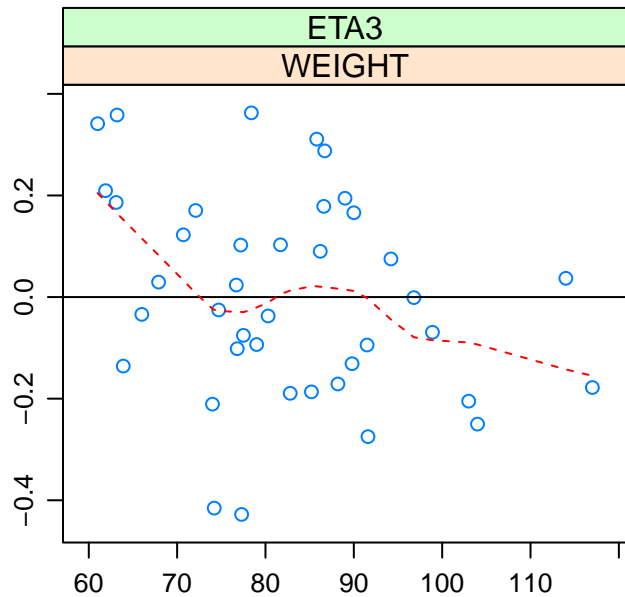
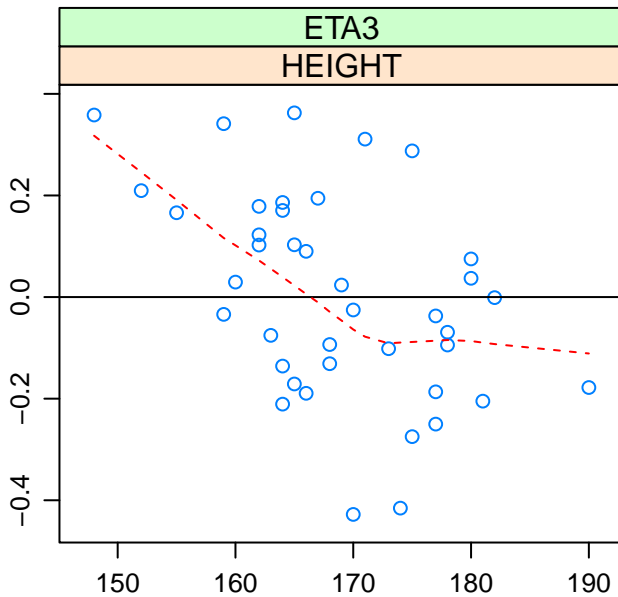
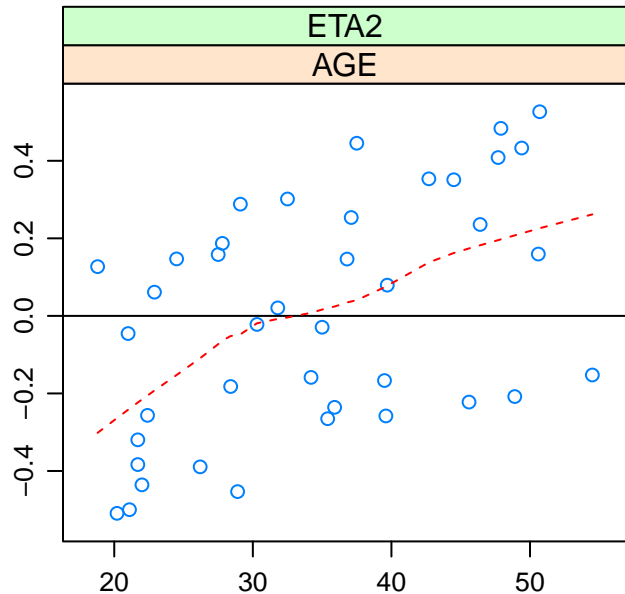
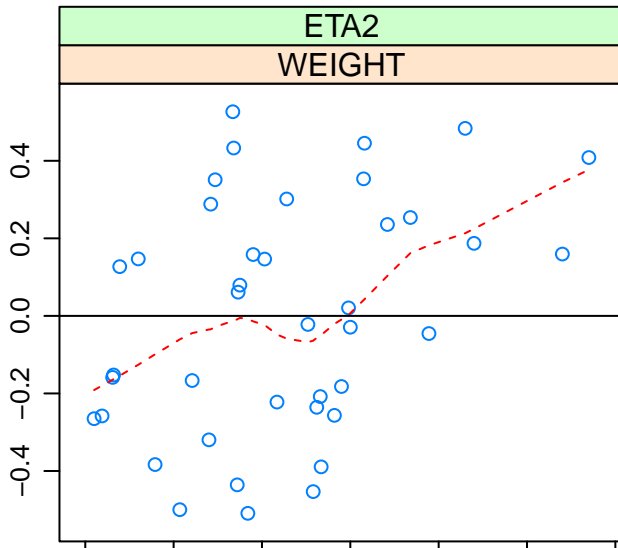
categorical covariate level

Etas vs. Continuous Covariates



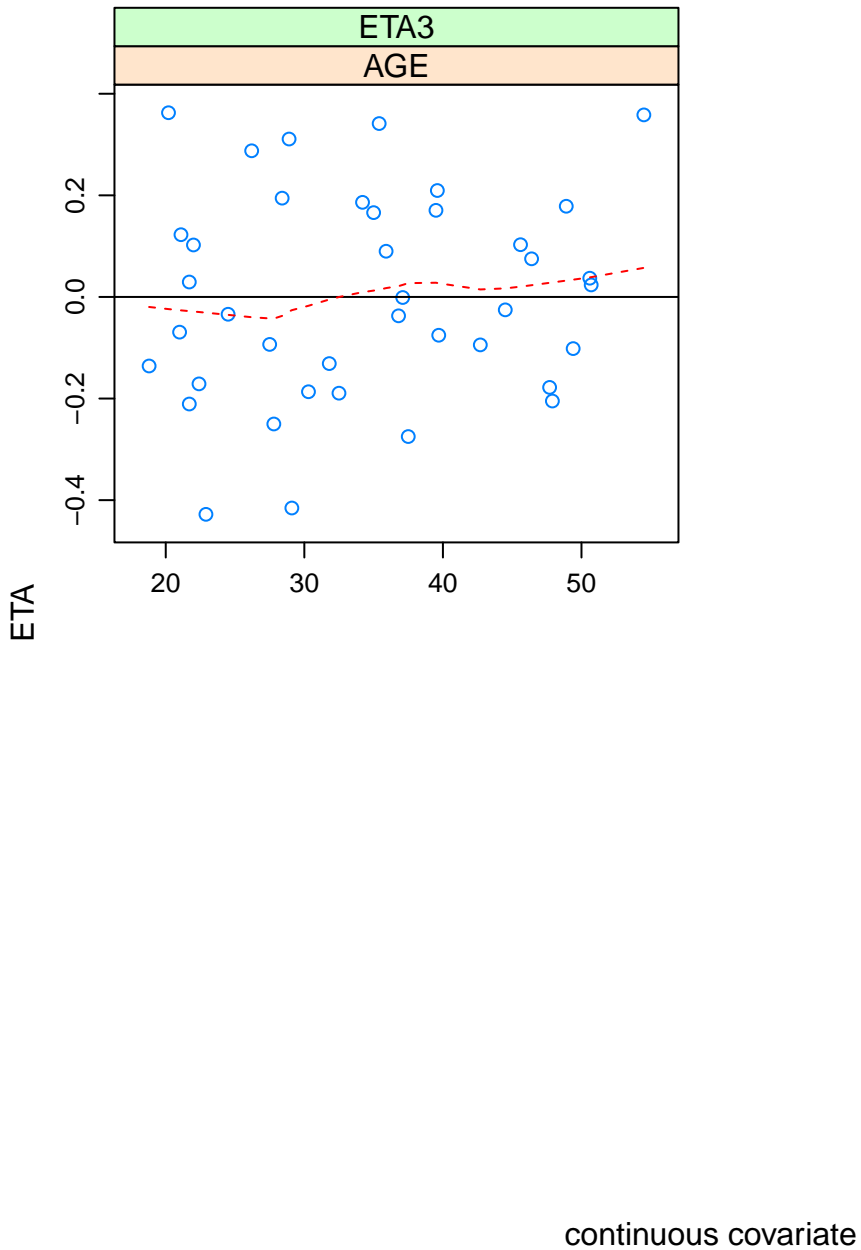
continuous covariate

Etas vs. Continuous Covariates

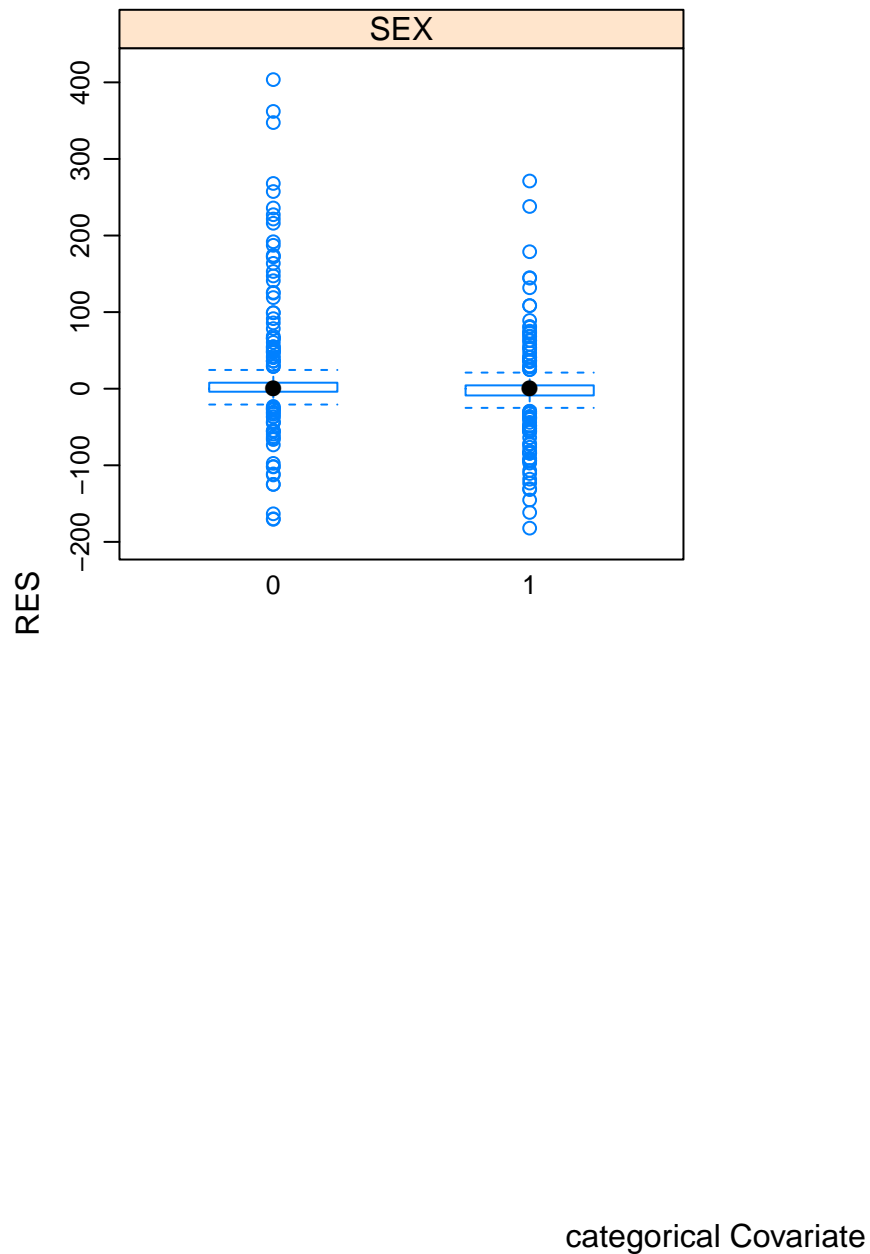


continuous covariate

Etas vs. Continuous Covariates

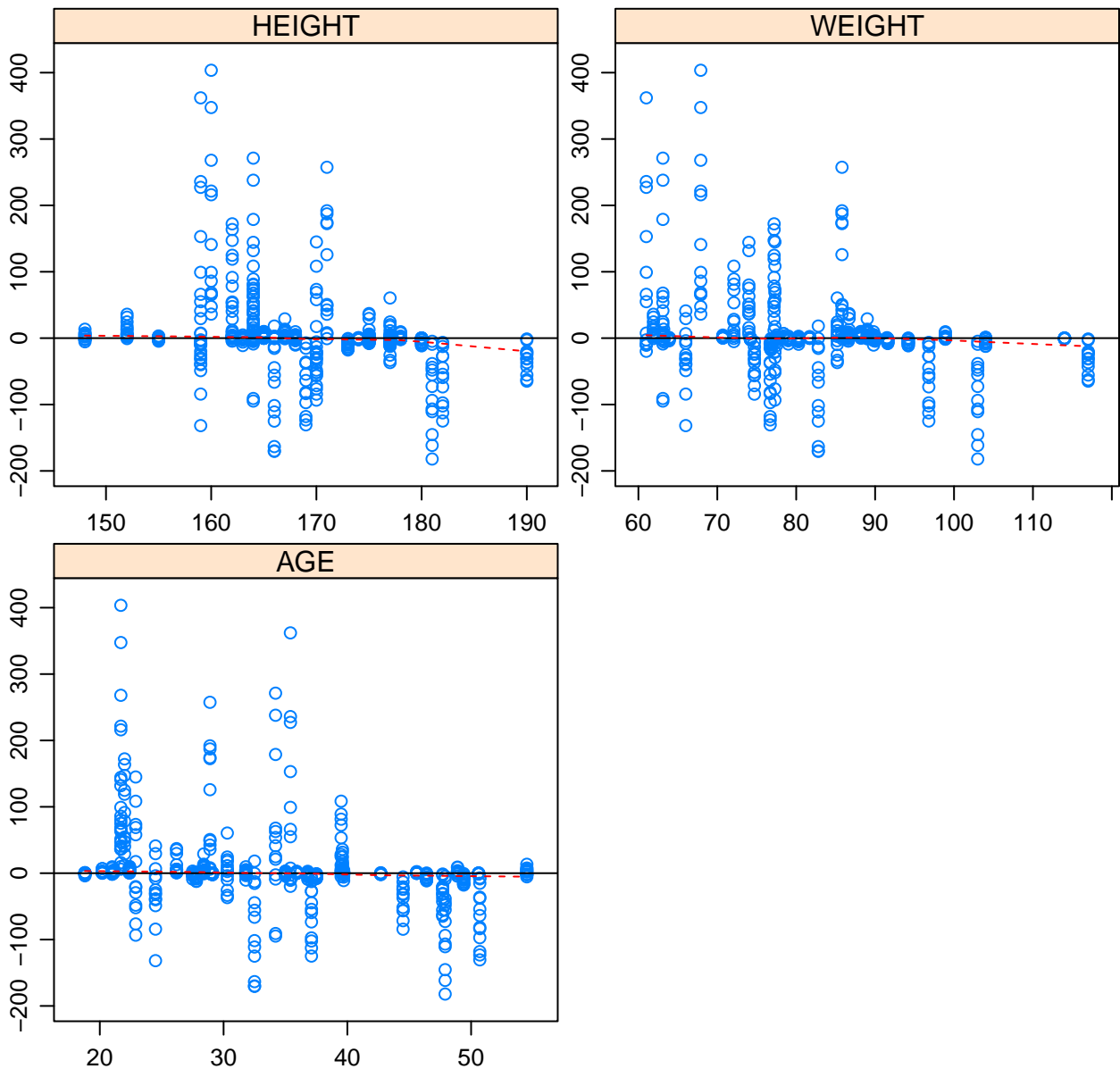


RES vs. Categorical Covariates



RES vs. Continuous Covariates

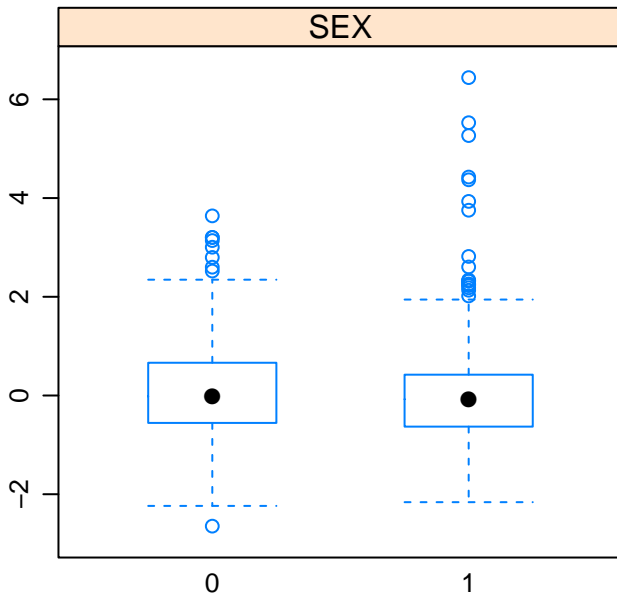
RES



continuous covariate

WRES vs. Categorical Covariates

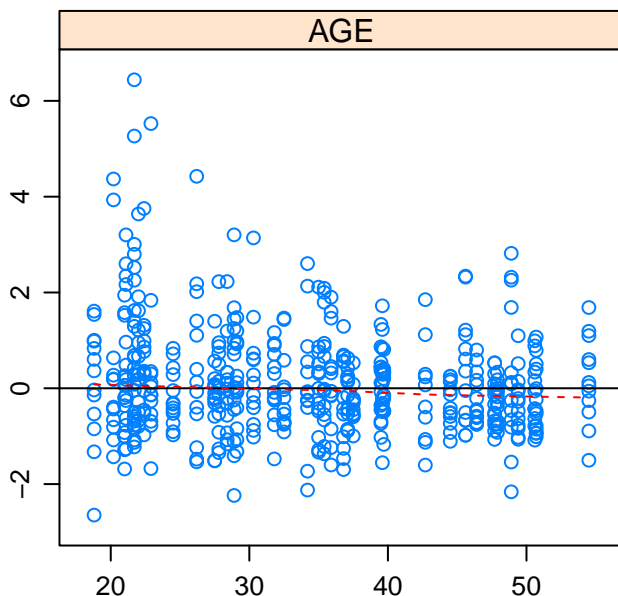
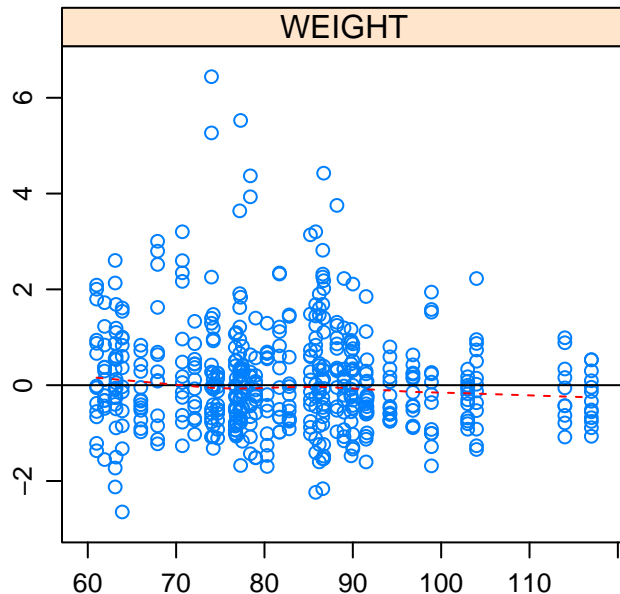
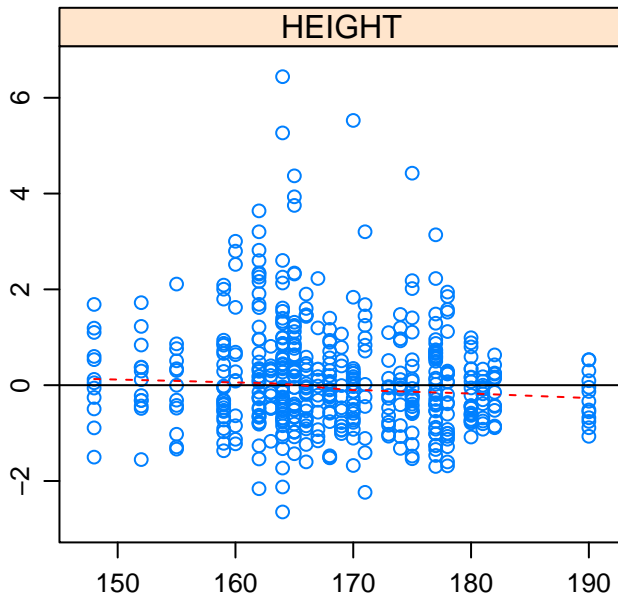
WRES



categorical Covariate

WRES vs. Continuous Covariates

WRES

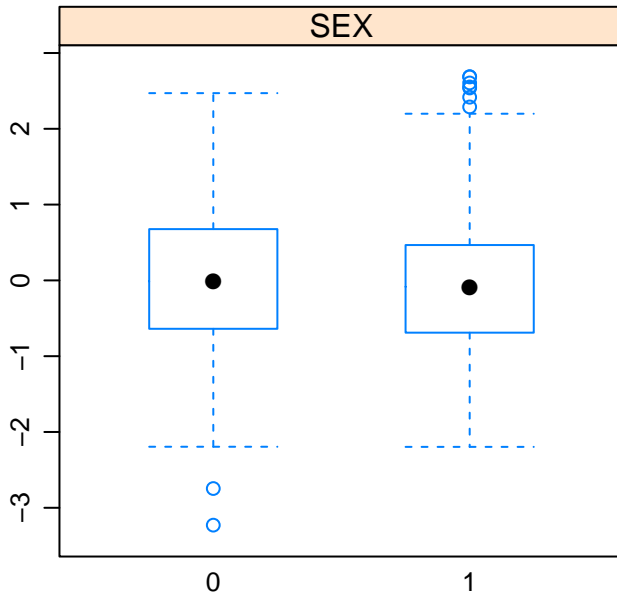


continuous covariate

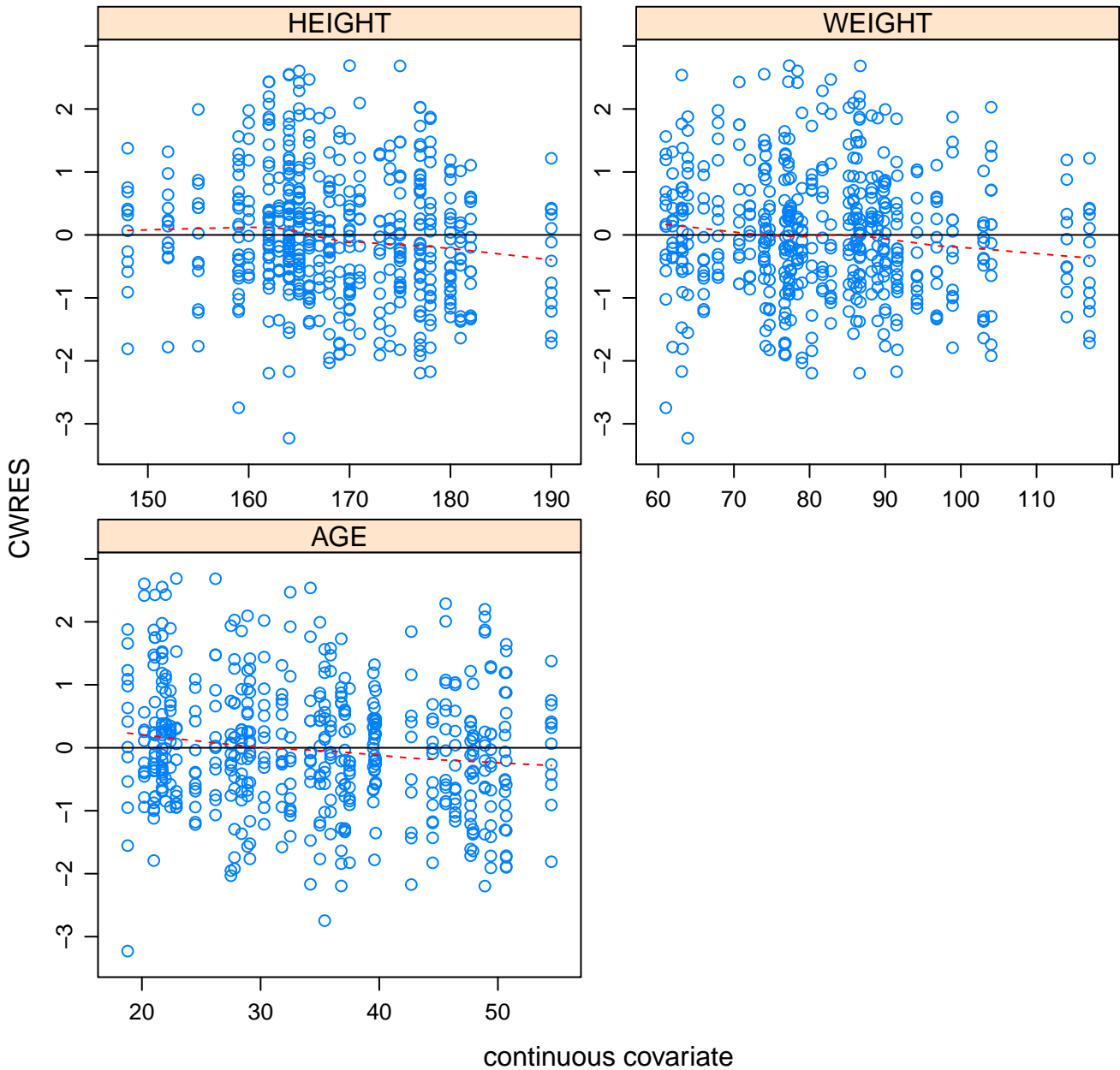
CWRES vs. Categorical Covariates

CWRES

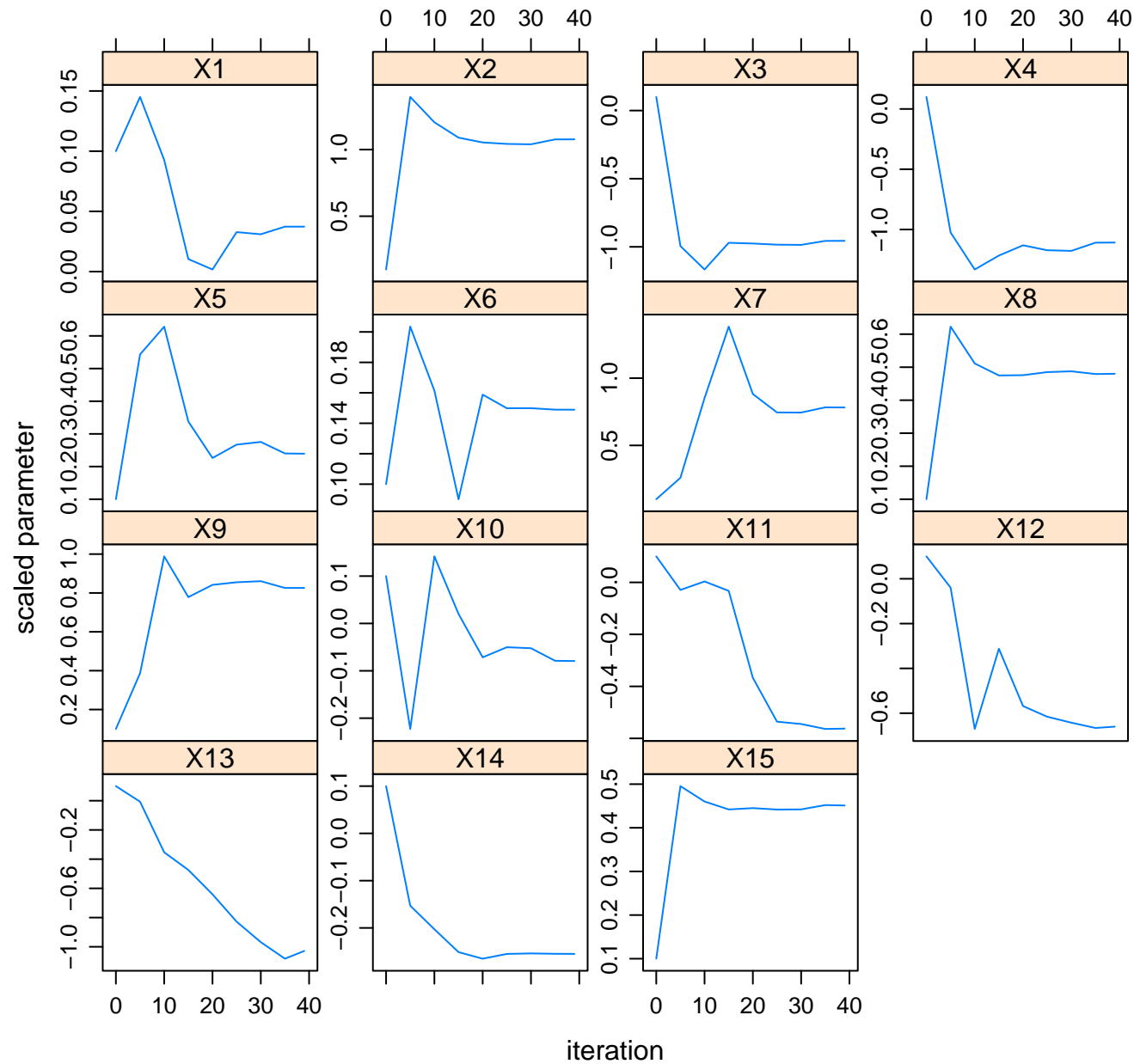
categorical Covariate



CWRES vs. Continuous Covariates



Model 1005 parameter search



Model 1005 gradient search

